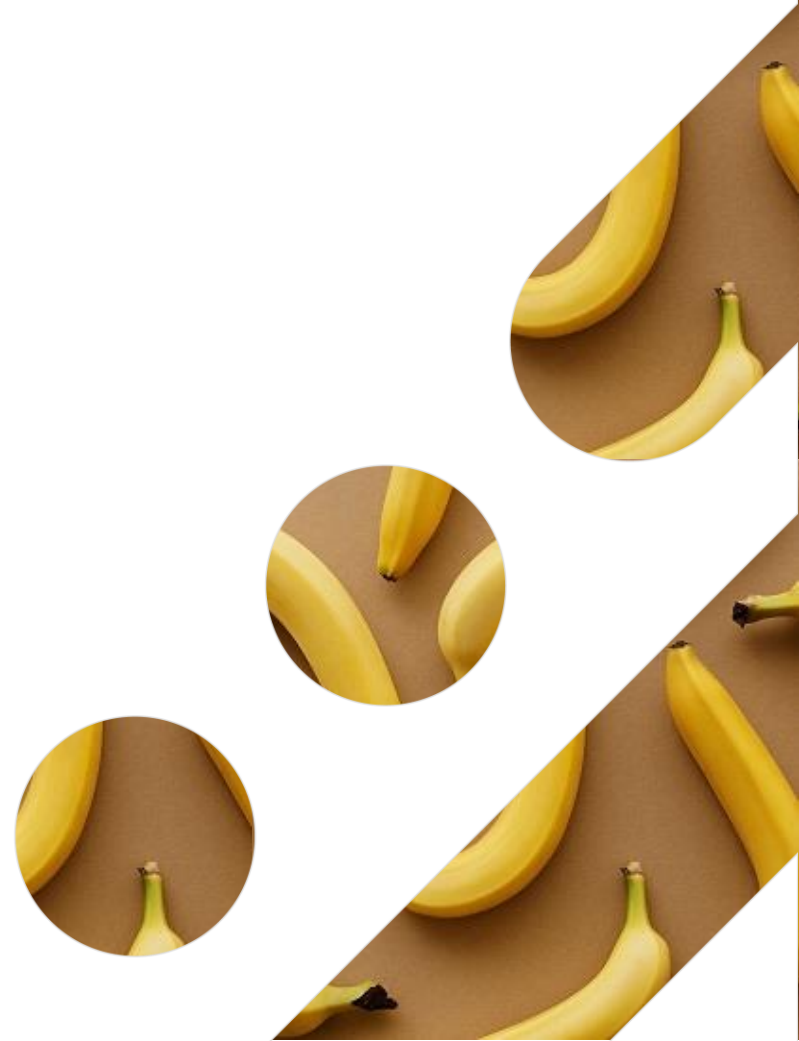


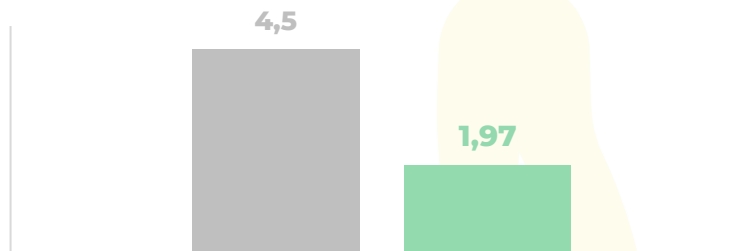
Crown Rot evaluation

Crown rot scale	
% Crown with mycelium	Level
Between 0-10%	1
Between 11-30%	2
Between 31-50%	3
Between 51-70%	4
Between 71-90%	5
Between 91-100%	6



Packaging line test

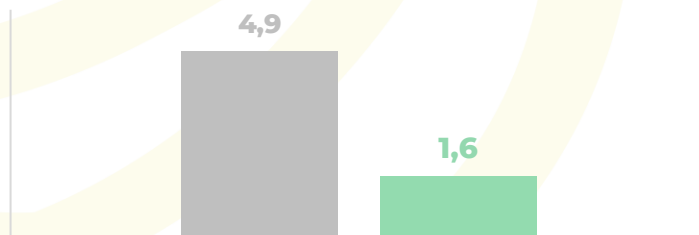
LEVEL OF MYCELIUM IN THE CROWN



NIVEL

■ CONTROL ■ SANICLUSTER

CROWN'S ROTTEN LEVEL

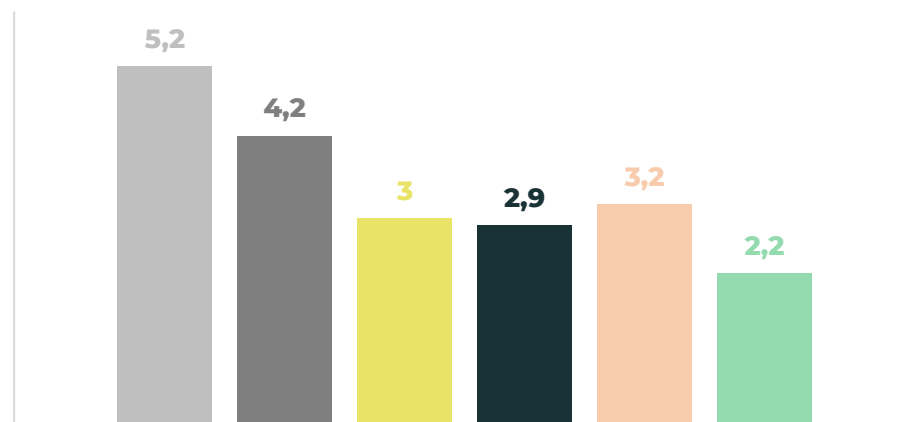


NIVEL

■ CONTROL ■ SANICLUSTER



COMPARISON OF ROT LEVELS WITH OTHER TREATMENTS ON THE ORGANIC BANANA MARKET



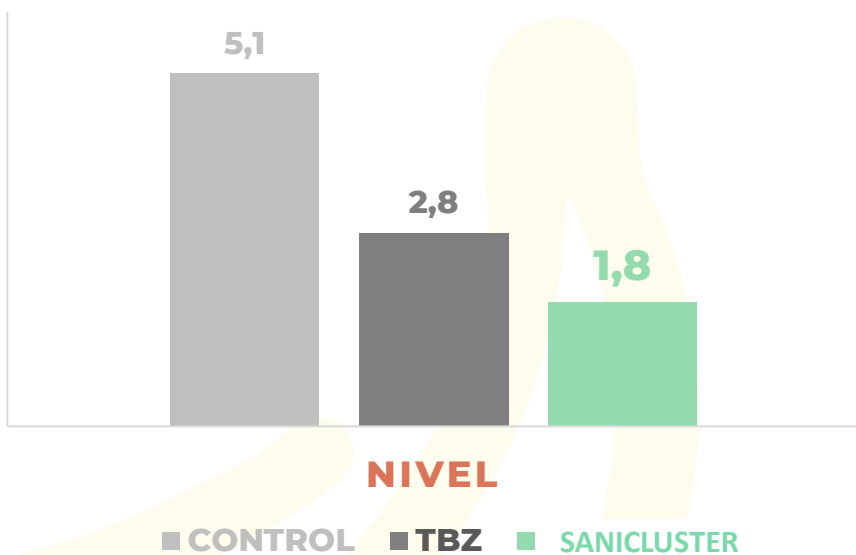
NIVEL

■ CONTROL ■ TTO 1 ■ TTO 2 ■ TTO 3 ■ TTO 4 ■ SANICLUSTER



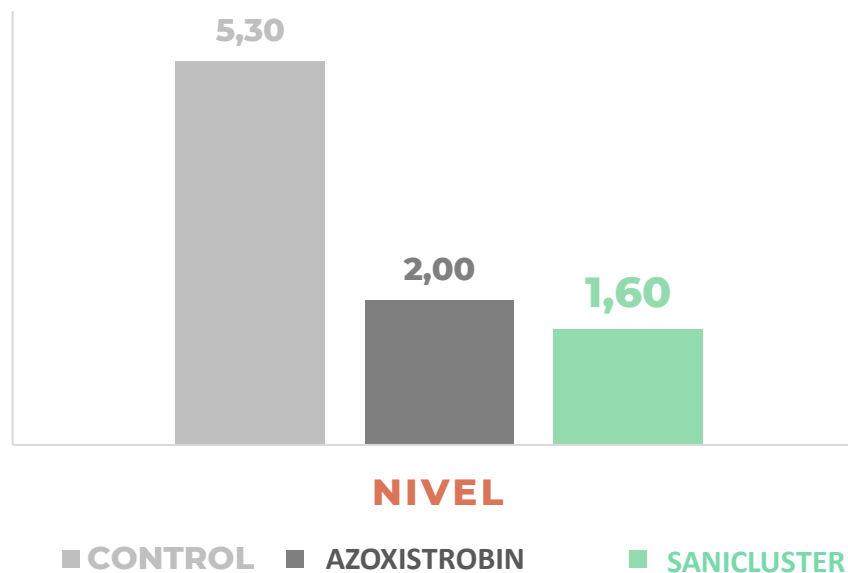
Packaging line test

ROTTEN VS. TBZ

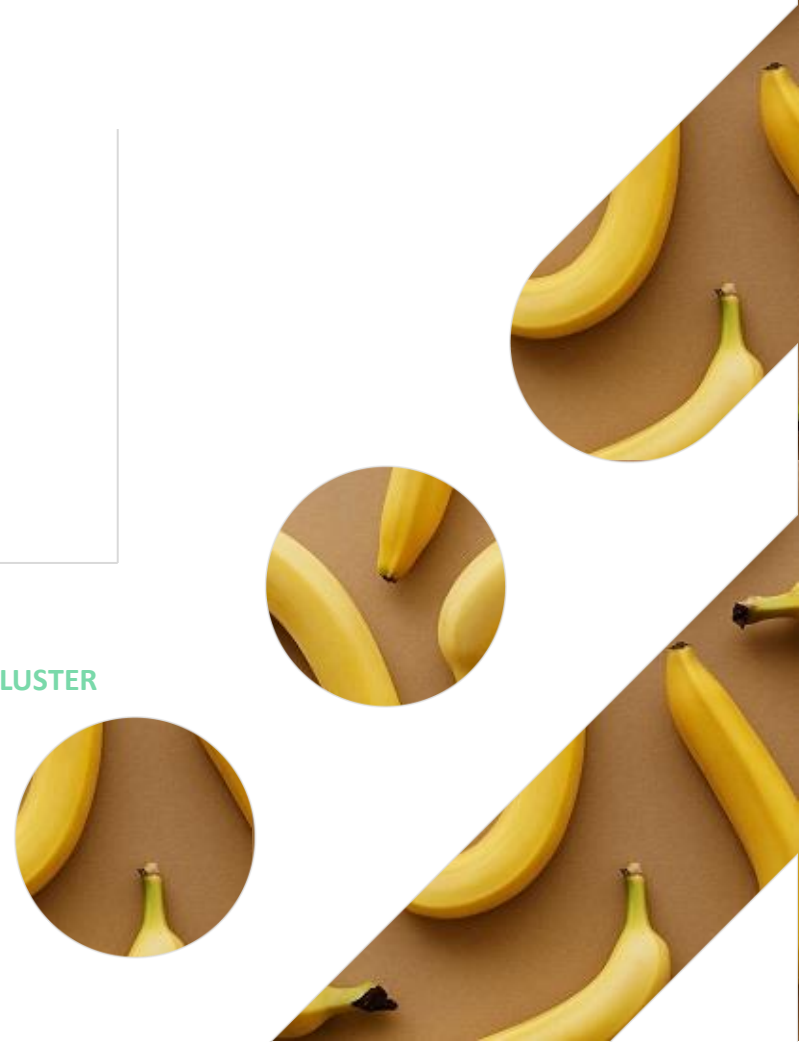


Fruit treated by immersion
18 days cold room + 5 days ripening process

ROTTEN VS. AZOXISTROBIN



7 days cold room + 5 days ripening+ 1
day room temperature





Pol. Ind. La Pahilla – c/Collao, 238 46370 Chiva (Valencia) SPAIN
www.sanifruit.com – sanifruit@sanifruit.com. – Tel.: +34 962 521 814

www.sanifruit.com