

REPORT – AFTER EXPORT

AVOCADO HASS VARIETY

AFTER EXPORT	% WEIGHT LOSS	% EXTERNAL FRUIT DAMAGES (Black Cold)
CONTROL WITHOUT TREATMENT	3,1	7,5
SANIAVO 20%	2,2	5,8

RIPENING AFTER EXPORT	% INTERNAL FRUIT DAMAGES
CONTROL WITHOUT TREATMENT	1,2
SANIAVO 20%	1,0

AFTER RIPENING AND EXPORT	% ROTTEN
CONTROL WITHOUT TREATMENT	14,5
SANIAVO 20%	8,0
SANIAVO 20% + SANIAVO PLUS 5%	3,3

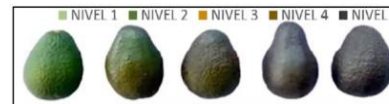
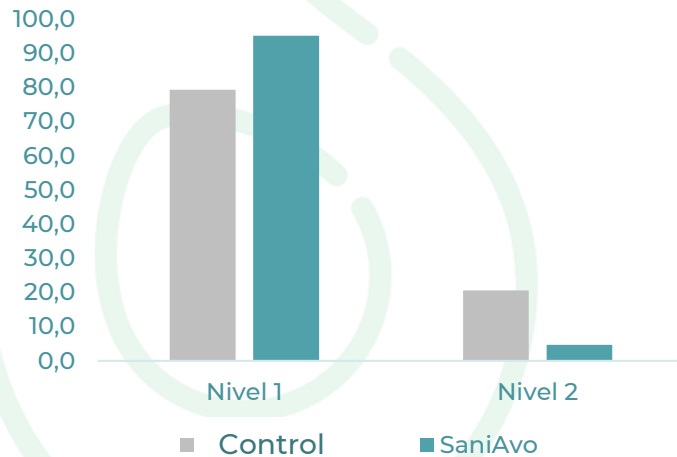


REPORT – WEIGHT LOSS

AVOCADO HASS VARIETY

- Extends avocado's shelf-life and greener external color.
- Keeps color's uniformity.
- Firmness: Positive internal ripening although it has a green external appearance.

EXTERNAL ASPECT AFTER EXPORT (30 DAYS)



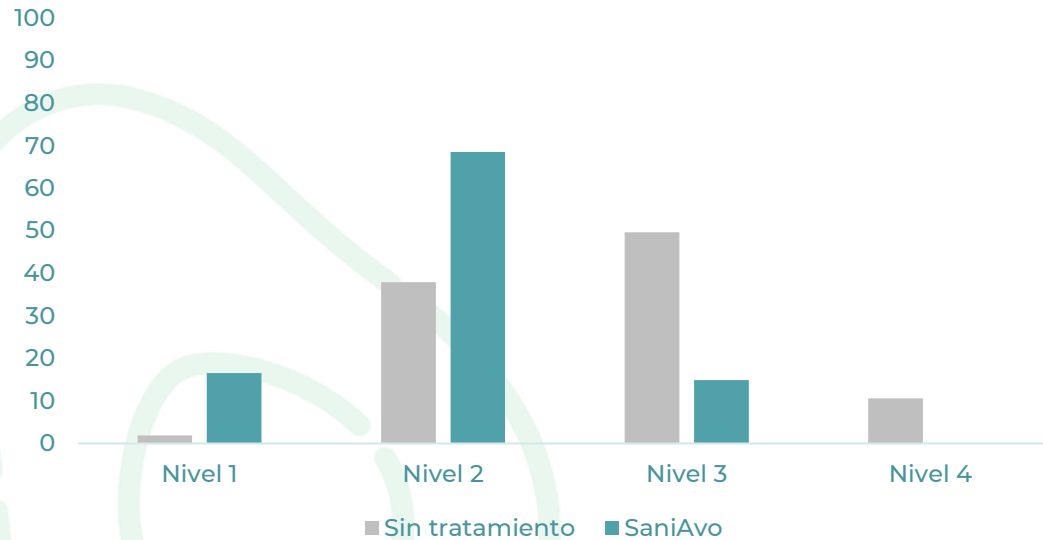
% in different levels of color		
After transport (30 days)	Control	SaniAvo
Nivel 1	79,4	95,2
Nivel 2	20,6	4,8



REPORT – EXTERNAL APPEARANCE

AVOCADO HASS VARIETY

External color appearance after 30d export + 3d ripening



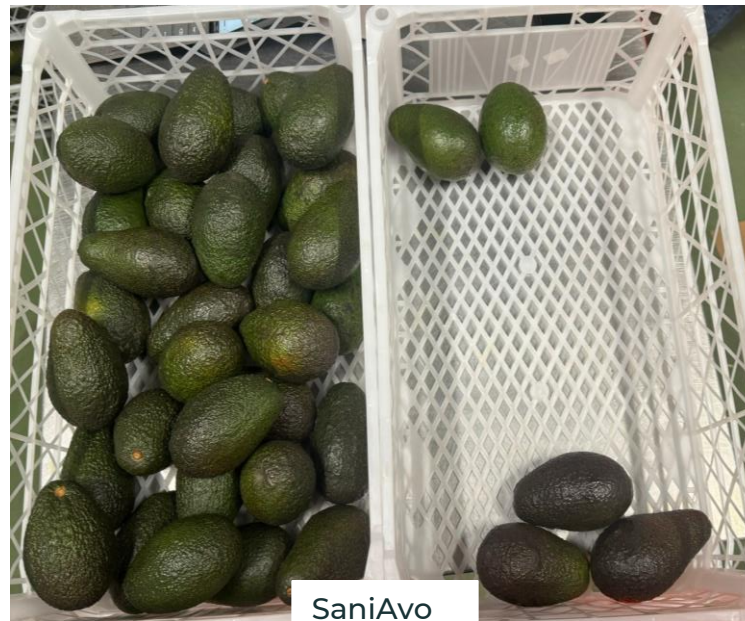
% in different levels of color		
After transport (30 days)+ 3 days ripening	Control	SaniAvo
Nivel 1	2	17
Nivel 2	38	69
Nivel 3	50	15
Nivel 4	11	0



REPORT – FIRMNESS

AVOCADO HASS VARIETY

Firmness after 3 days ripening	Penetromy (kg/cm ²)
CONTROL	3,5
SaniAvo 20%	4,6



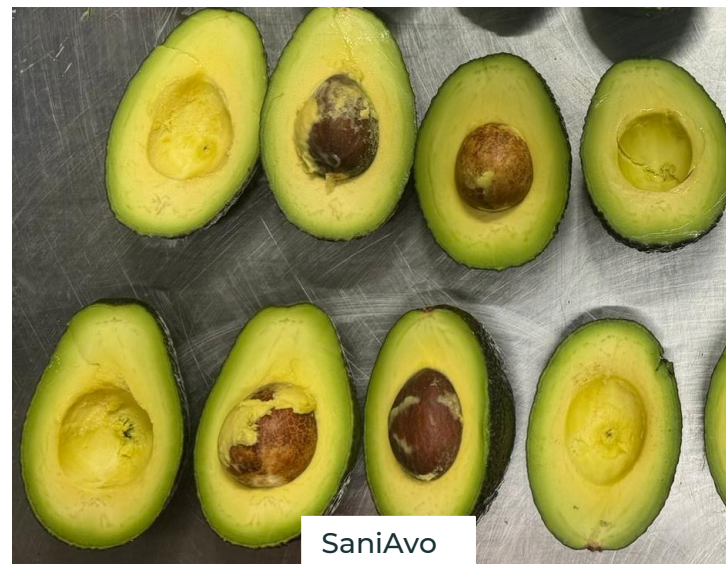
REPORT –IMPORTANT KEYS

AVOCADO HASS VARIETY Green color: After ripening as much as after cold, there is no difference in color

Firmness after 3d ripening	Penetromy (kg/cm ²)
CONTROL (Without)	3,5
SANIAVO 20%	4,6

- ✓ Control: bone detachment or pulp's division from skin
- ✓ SaniAvo: higher firmness of the fruit

TEST 1



REPORT –IMPORTANT KEYS

AVOCADO HASS VARIETY

Green color: After ripening as much as after cold, there is no difference in color

Firmness after 3d ripening	Penetromy (kg/cm ²)
CONTROL	3,5
SANIAVO 20%	4,6

- ✓ Control: bone detachment or pulp's division from skin
- ✓ SaniAvo: higher firmness of the fruit

TEST 2



Control



SaniAvo





Pol. Ind. La Pahilla – c/ Collao, 238 46370 Chiva (Valencia) SPAIN
www.sanifruit.com – sanifruit@sanifruit.com. – Tel.: +34 962 521 814

www.sanifruit.com